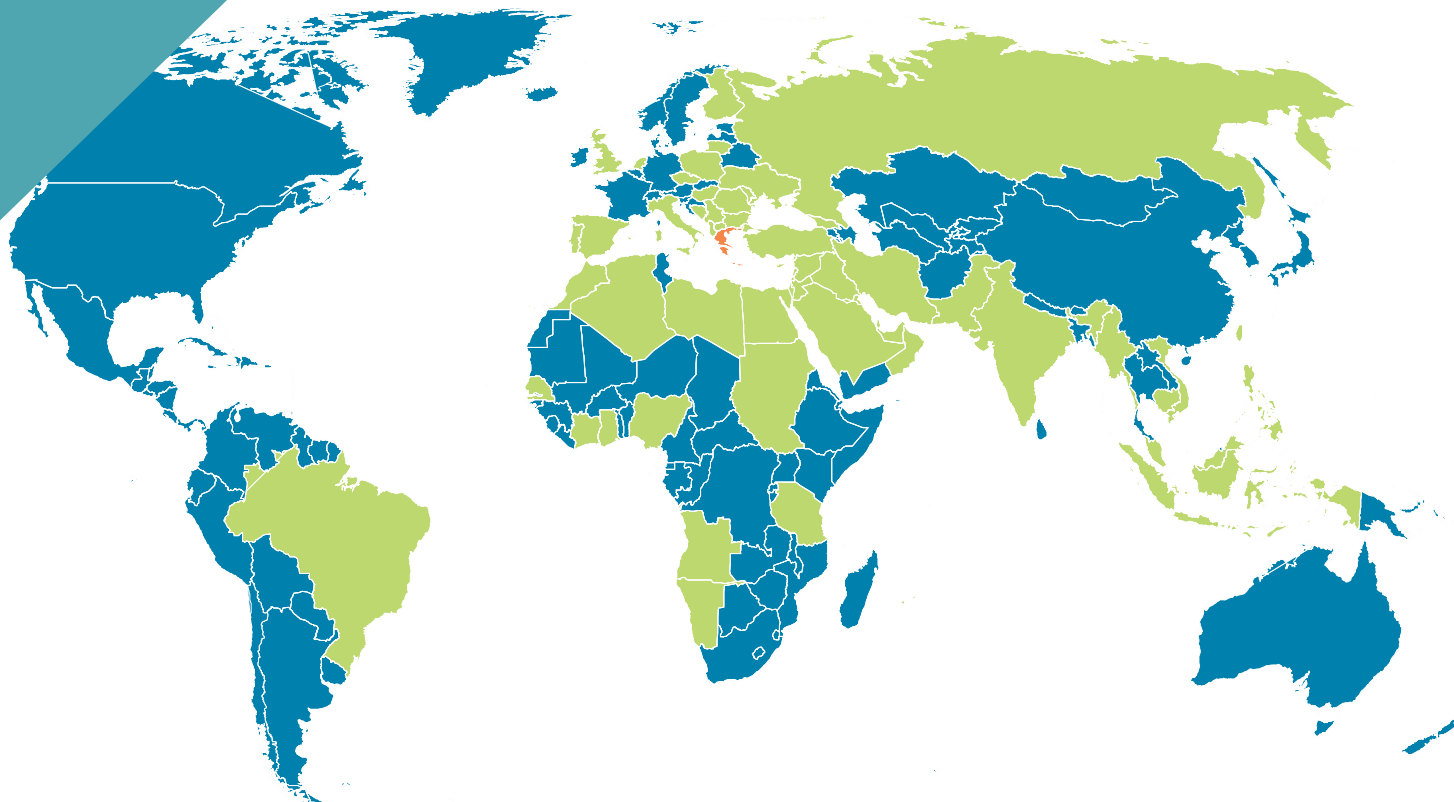


MORE THAN
2500 PROJECTS
ALL OVER
THE WORLD

since
1968

A whole world of technical excellence



ABOUT OUR COMPANY

G. SAMARAS S.A. is an international manufacturing company located in Thessaloniki, Greece. Having been active in the medical gas field since 1968, the company has a track record of continuous evolution and development. G. SAMARAS S.A. has become the leader in the Greek medical gas supply systems market, in which it holds more than 85% of the share. From the very beginning, G. SAMARAS S.A. recognized the importance of international growth. Thus, the company has managed to achieve a broad exports activity and network and, consequently, an extensive worldwide reference list. Having professionalism, reliability, solvency and flexibility as its key principles and guidelines, the company has gained not only valuable experience, but also strong domestic and international recognition and

reputation. Its strong know – how of medical gas supply systems and the durability of its products, has led the company to a strong market position. G. SAMARAS S.A. holds a very wide service and product portfolio, which is characterized by completeness, quality and a high degree of customization on everything related to medical gas supply systems. The company's facilities occupy a building of 4000 m² in the Industrial Area of Themi, Thessaloniki (Northern Greece). The company's skilled personnel consists of electrical and mechanical engineers, graduate and post-graduate economists, as well as licensed welders and electricians, who constitutes the driving force of the company.

OUR SERVICES AND PRODUCTS PORTFOLIO

SERVICES

Designing and Calculations
Installations
Testing, Commissioning and Certification
Maintenance and After Sales Support
Training
GSM / GPRS Remote Monitoring Management

PRODUCTS

Medical Gas Networks
Cylinder Stations
Pathology Laboratory Gas Systems
Medical Vacuum Systems
Medical Air Compressor Systems
Oxygen – Nitrogen Generators
Anaesthetic Gas Scavenging Systems (AGSS)
Medical Gas Outlets – Probes

Second Stage Reducer Panels / Area Valve
Service Units
Medical Gas Alarm Systems
Bed Head Units
Ceiling Pendant Arms
OPT Control Panels
Nurse Call Systems
Secondary Medical Equipment

SURGEON CHAIRS



10510010001:

Made entirely of stainless steel 18/10 AISI 304 (X5CrNi1810).

Solid heavy base, round, with 5 antistatic castors Ø 60 mm, with central brake pedal.

Anatomical saddle seat, 420 mm wide, and back upholstered in high-density polyurethane flame retardant designed to ensure a comfortable posture and not overly warm the surgeon. The seat and back are covered with anti-static vinyl. Rotation of the saddle 360°.

Anatomical back with back support designed not to interfere with the clean arm of the surgeon. Adjustable backrest height and depth mounted on spring steel support.

Elevation system using precision hydraulic pump, double movement, a sealed circuit with activation pedal. Elevation ranges from 590 mm to 790 mm. Pedal covered in high-grip rubber.

Dim. Saddle: L. 420x80h

Dim. Overall: mm Ø 440-590 / 790h

Weight: 22 kg



10510010002:

Made entirely of stainless steel 18/10 AISI 304 (X5CrNi1810).

Solid base heavy, round, with 5 castors Ø 60 mm antistatic marking rubber, with central brake pedal activation.

Seat, Ø 360 mm, and upholstered in high-density polyurethane flame retardant designed to ensure a comfortable posture and not overly warm the surgeon, the seat and back are covered with anti-static vinyl. 360 ° rotation of the seat.

Anatomic back with back support designed to not interfere with the clean arm of the surgeon. Adjustable backrest height and depth stand mounted in harmonic steel.

Elevation system using precision hydraulic pump, double movement, a sealed circuit with activation pedal. Elevation ranges from 610 mm to 810 mm Pedal covered in high-grip rubber.

Dim. Saddle: mm Ø 360x100h

Dim. Overall: 440 mm diameter X610 / 810h

Weight: 22 kg



OPERATING THEATRE STOOLS



10510010003:

Frame and base entirely made of 18/10 stainless steel AISI 304 (X5CrNi1810).

Column with protective casing with telescopic movement.

5-spoke base with safety tips, a circular section, with wheels Ø 75 mm in non-marking polymer, of which 3 anti-static

Adjustable height from 480 mm to 600 mm

Seat Ø 360 mm in polished aluminum.

Dimensions: Ø 540 mm x 480 / 600h



10510010004:

Frame and base entirely made of 18/10 stainless steel AISI 304 (X5CrNi1810).

Column with protective casing with telescopic movement.

5-spoke base with safety tips, a circular section, with non-marking polymer feet

Adjustable height from 420 mm to 540 mm

Seat Ø 360 mm in polished aluminum.

Dimensions: Ø 540 mm x 480 / 600h



OPERATING THEATRE STOOLS



10510010005:

Frame and base entirely made of 18/10 stainless steel AISI 304 (X5CrNi1810).

Column with protective casing with telescopic movement.

5-spoke base with safety tips, a circular section, with wheels Ø 75 mm in non-marking polymer, of which 3 anti-static

Adjustable height from 505 mm to 625 mm

Sitting mm Ø 360x100h padded with polyurethane high density fire retardant and covered in anti-static fabric.

Dimensions: Ø 540 mm x 505 / 625H



10510010006:

Frame and base entirely made of 18/10 stainless steel AISI 304 (X5CrNi1810).

Column with protective casing with telescopic movement.

5-spoke base with safety tips, a circular section, with non-marking polymer feet.

Adjustable height from 440 mm to 560 mm

Sitting mm Ø 360x100h mm padded with polyurethane high density fire retardant and covered in anti-static fabric.

Dimensions: 440 mm Ø 540X / 560H



SURGEON CHAIRS FOR OUTPATIENT DEPARTMENT



10510010007:

Based on 5-spoke cast aluminum, equipped with 5 castors Ø 50 mm twin-marking polymer, central brake activation pedal and footrest in stainless steel 18/10 AISI 304 (X5CrNi1810).

Seat anatomic seat and back upholstered in fire retardant polyurethane coated antibacterial leatherette. Rotation of 360 ° saddle.

Adjustable backrest height and depth stand mounted in harmonic steel.

Elevation system using hydraulic precision pump Steel Chrome, the single movement, a sealed circuit with activation pedal. Elevation ranges from mm 630 to mm 830. Pedal-coated high-grip rubber.

Dim. Seat: mm L.420x80h

Dim. Overall: mm Ø 690 × 630 / 830h

Weight: Kg. 14



G. Samaras S.A.
MEDICAL GAS SYSTEMS

10510010008:

Based on 5-spoke cast aluminum, equipped with 5 castors Ø 50 mm twin-marking polymer, central brake activation pedal and footrest in stainless steel 18/10 AISI 304 (X5CrNi1810).

Round seat and back upholstered in fire retardant polyurethane coated antibacterial leatherette. Rotation of 360 ° saddle.

Adjustable backrest height and depth stand mounted in harmonic steel.

Elevation system using hydraulic precision pump Steel Chrome, the single movement, a sealed circuit with activation pedal. Elevation ranges from mm 630 to mm 830. Pedal-coated high-grip rubber.

Dim. Seat: mm Ø 360x50h

Dim. Overall: mm Ø 690 × 630 / 830h

Weight: 14 kg



STOOLS FOR OUTPATIENT DEPARTMENT



10510010021:

Based on 5-spoke cast aluminum.

Round seat and cast aluminum and 360 ° rotation of the seat with possible adjustable backrest height and depth stand mounted in harmonic steel.

Elevation system using precision hydraulic pump Chrome plated steel, the single movement, a sealed circuit with activating foot. Elevation range 530-730mm.

Pedal-coated high-grip rubber.

5 polymer-marking wheels Ø 50 mm twin.

Dim. Seat: mm Ø 360x50h

Dim. Dimension: Ø 610 mm × 530 / 730h

Weight: 10 kg



10510010019:

Based on 5-spoke cast aluminum.

Round seat upholstered in fireproof foam covered with antibacterial leather.

Rotation of 360 ° of the saddle.

Elevation system using precision hydraulic pump Chrome plated steel, the single movement, a sealed circuit with activating foot. Elevation range 590-790mm.

5 wheels polymer Ø 50 mm twin.

Dim. Seat: mm Ø 360x50h

Dim. Dimension: Ø 610 mm × 590 / 790h

Weight: 10 kg

STOOLS FOR OUTPATIENT DEPARTMENT



10510010020:

Based on 5-spoke cast aluminum.

Round seat upholstered in fireproof foam covered with antibacterial leather.

Rotation of 360 ° of the saddle.

Elevation system using precision hydraulic pump Chrome plated steel, the single movement, a sealed circuit with activating foot. Elevation range 590-790mm.

Pedal-coated high-grip rubber.

5 polymer-marking wheels Ø 50 mm twin.

Dim. Seat: mm Ø 360x50h

Dim. Dimension: Ø 610 mm × 590 / 790h

Weight: 10 kg



10510010009:

Base and seat in die-cast aluminum

Chrome steel lifting column.

5 twin polymer wheels Ø 50 mm.

Dim. Seat: mm Ø 360x50h

Dim. Dimension: Ø 610 mm × 510 / 650h

10510010010:

Base and seat in die-cast aluminum.

Lifting column in chromed steel.

5 feet polymer.

Dim. Seat: mm Ø 360x50h

Dim. Dimension: Ø 610 mm × 510 / 650h

STOOLS FOR OUTPATIENT DEPARTMENT



10510010011:

Base in die-cast aluminum base and padded. Screw lifting column in chromed steel. 5 wheels polymer Ø 50 mm twin. Dim. Seat: mm Ø 360x50h
Dim. Dimension: Ø 610 mm × 640 / 780h

10510010012:

Base in die-cast aluminum base and padded. Screw lifting column in chromed steel. 5 feet polymer. Dim. Seat: mm Ø 360x50h
Dim. Dimension: Ø 610 mm × 590 / 730h

10510010015:

Base in die-cast aluminum. Screw lifting column in chromed steel. Round seat upholstered in fireproof material and covered with antibacterial leather. 5 wheels polymer Ø 50 mm twin. Dim. Seat: mm Ø 360x50h
Dim. Dimension: Ø 610 mm x 610 / 860h

10510010016:

Base in die-cast aluminum. Screw lifting column in chromed steel. Round seat upholstered in fireproof material and covered with antibacterial leather. 5 feet polymer. Dim. Seat: mm Ø 360x50h
Dim. Dimension: Ø 610 mm x 560 / 810h



10510010013: Base in die-cast aluminum base and padded. Screw lifting column in chromed steel. Round upholstered seat and back made of fireproof material and covered with antibacterial leather. 5 wheels polymer Ø 50 mm twin. Dim. Seat: mm Ø 360x50h
Dim. Dimension: Ø 610 mm x 640 / 780h

10510010014: Base in die-cast aluminum base and padded. Screw lifting column in chromed steel. Round seat and backrest made of fireproof material and covered with antibacterial leather. 5-pin-marking polymer. Dim. Seat: mm Ø 360x50h
Dim. Dimension: Ø 610 mm x 590 / 730h

10510010017: Base in die-cast aluminum base and padded. Lifting column in chromed steel. Round seat and backrest made of fireproof material and covered with antibacterial leather. 5 wheels polymer Ø 50 mm twin. Dim. Seat: mm Ø 360x50h
Dim. Dimension: Ø 610 mm x 610 / 860h

10510010018: Base in die-cast aluminum base and padded. Lifting column in chromed steel. Round seat and backrest made of fireproof material and covered with antibacterial leather. 5 feet polymer. Dim. Seat: mm Ø 360x50h
Dim. Dimension: Ø 610 mm x 560 / 810h

MAYO TROLLEYS



G. Samaras S.A.
MEDICAL GAS SYSTEMS

10510020001/10510020004:

Made entirely of stainless steel 18/10 AISI 304 (X5CrNi1810), guarantees:

High degree of resistance to corrosion.

High degree of bacterial removal.

Low-grade bacterial retention.

Excellent durability.

The requirements of this Mayo table with double-motion pump and swivel iron door are:

Stand solid 3-spoke tube of rectangular section, with safety tips, with 3 double wheels Ø 75 mm, with yarn protection, polymer marking, of which 2 with brake and 1 antistatic.

Removable work surface, deep-drawn and no open corners, with perimeter rayed. Degree of freedom + 180 ° / - 180 °, degree of operational safety + 90 ° / - 90 °. Rotation system with safety lock.

Lifting system by hydraulic precision pump, with double movement, a sealed circuit with activation pedal. Elevation ranges from mm 910 to mm 1270. Pedal ergonomically located place inside the structure.

Maximum capacity 30 kg, evenly distributed on the work surface.

The materials and the assembly system allow the disinfection inside the washing tunnel.

10510020001:

Table top dimensions
750x550x30 mm

Overall dimensions
780x580x910 / 1270 mm

10510020004:

Table top dimensions
650x530x20 mm

Overall dimensions
780x580x910 / 1270 mm

MAYO TROLLEYS



10510020002/10510020005:

Made entirely of stainless steel 18/10 AISI 304 (X5CrNi1810), guarantees:

High degree of resistance to corrosion.

High degree of bacterial removal.

Low-grade bacterial retention.

Excellent durability.

The requirements of this Mayo table gridded door, with single-motion pump and swivel are:

Stand solid 3-spoke tube of rectangular section, with safety tips, with 3 double wheels Ø 75 mm, with yarn protection, non-marking polymer, of which 2 with brake and 1 antistatic.

Removable work surface, deep-drawn and no open corners, with perimeter rayed. Degree of freedom + 180 ° / - 180 °, degree of operational safety + 90 ° / - 90 °. Rotation system with safety lock.

Lifting system by hydraulic pump, with single movement, a sealed circuit with activation pedal. Elevation ranges from mm 910 to mm 1270. Pedal ergonomically located place inside the structure.

Maximum capacity 30 kg, evenly distributed on the work surface.

The materials and the assembly system allow the disinfection inside the washing tunnel.

10510020002:

Table top dimensions 750x550x30 mm

Overall dimensions 780x580x910 / 1270 mm

10510020005:

Table top dimensions 650x530x20 mm

Overall dimensions 780x580x910 / 1270 mm



10510020003/10510020006:

Made entirely of stainless steel 18/10 AISI 304 (X5CrNi1810), guarantees:

High degree of resistance to corrosion.

High degree of bacterial removal.

Low-grade bacterial retention.

Excellent durability.

The requirements of this table brings MAYO model irons, with single-motion pump are:

Stand solid 3-spoke tube of rectangular section, with safety tips, with 3 double wheels Ø 75 mm, with yarn protection, non-marking polymer, of which 2 with brake and 1 antistatic.

Removable work surface, deep-drawn and no open corners, with rounded perimeter. Worktop is not rotating.

Lifting system by hydraulic pump, with single movement, a sealed circuit with activation pedal. Elevation ranges from mm 910 to mm 1270. Pedal ergonomically located place inside the structure.

Maximum capacity 30 kg, evenly distributed on the work surface.

The materials and the assembly system allow the disinfection inside the washing tunnel.

10510020003:

Table top dimensions 750x550x30 mm

Overall dimensions 780x580x910 / 1270 mm

10510020006:

Table top dimensions 650x530x20 mm

Overall dimensions 780x580x910 / 1270 mm



MAYO TROLLEYS



10510020007/10510020010:

Made entirely of stainless steel 18/10 AISI 304 (X5CrNi1810), guarantees:

High degree of resistance to corrosion.

High degree of bacterial removal.

Low-grade bacterial retention.

Excellent durability.

The requirements of this Mayo table with double-pump and swivel movement are:

Stable base with 4 spokes with a circular section, with safety tips, equipped with 4 dual wheels Ø 75 mm, with yarn protection, non-marking polymer, of which 2 with brake and 2 antistatic.

Removable work surface, deep-drawn and no open corners, with rounded perimeter. Degree of freedom + 180 ° / - 180 °, degree of operational safety + 90 ° / - 90 °. Rotation system with safety lock.

Lifting system by hydraulic precision pump, with double movement, a sealed circuit with activation pedal. Elevation ranges from 935 mm to 1,300 mm. Pedal ergonomically located place inside the structure.

Maximum capacity 30 kg, evenly distributed on the work surface.

The materials and the assembly system allow the disinfection inside the washing tunnel.

10510020007:

Table top dimensions 750x550x30 mm

Overall dimensions 780x580x935 / 1300 mm

10510020010:

Table top dimensions 650x530x20 mm

Overall dimensions 735x540x935 / 1300 mm



G. Samaras S.A.
MEDICAL GAS SYSTEMS



10510020008/10510020011:

Made entirely of stainless steel 18/10 AISI 304 (X5CrNi1810), guarantees:

High degree of resistance to corrosion.

High degree of bacterial removal.

Low-grade bacterial retention.

Excellent durability.

The requirements of this Mayo table with single-motion pump and swivel are:

Stable base with 4 spokes with a circular section, with safety tips, equipped with 4 dual wheels Ø 75 mm, with yarn protection, non-marking polymer, of which 2 with brake and 2 antistatic.

Removable work surface, deep-drawn and no open corners, with rounded perimeter. Degree of freedom + 180 ° / - 180 °, degree of operational safety + 90 ° / - 90 °.

Rotation system with safety lock.

Lifting system by hydraulic pump, with single movement, a sealed circuit with activation pedal. Elevation ranges from 935 mm to 1,300 mm. Pedal ergonomically located place inside the structure.

Maximum capacity 30 kg, evenly distributed on the work surface.

The materials and the assembly system allow the disinfection inside the washing tunnel.

10510020008:

Table top dimensions 750x550x30 mm

Overall dimensions 780x580x935 / 1300 mm

10510020011:

Table top dimensions 650x530x20 mm

Overall dimensions 735x540x935 / 1300 mm

MAYO TROLLEYS



10510020009/10510020012:

Made entirely of stainless steel 18/10 AISI 304 (X5CrNi1810), guarantees:

High degree of resistance to corrosion.

High degree of bacterial removal.

Low-grade bacterial retention.

Excellent durability.

The requirements of this table Mayo iron door with a single movement pump and fixed plan are:

Stable base with 4 spokes with a circular section, with safety tips, equipped with 4 dual wheels Ø 75 mm, with yarn protection, non-marking polymer, of which 2 with brake and 2 antistatic.

Removable work surface, deep-drawn and no open corners, with rounded perimeter.

Lifting system by hydraulic pump, with single movement, a sealed circuit with activation pedal. Elevation ranges from 935 mm to 1,300 mm. Pedal ergonomically located place inside the structure.

Maximum capacity 30 kg, evenly distributed on the work surface.

The materials and the assembly system allow the disinfection inside the washing tunnel.

10510020009:

Table top dimensions 750x550x30 mm

Overall dimensions 780x580x935 / 1300 mm

10510020012:

Table top dimensions 650x530x20 mm

Overall dimensions 735x540x935 / 1300 mm



G. Samaras S.A.
MEDICAL GAS SYSTEMS



10510020014:

Made entirely of stainless steel 18/10 AISI 304 (X5CrNi1810), provides:

High degree of resistance to corrosion.

High degree of bacterial removal.

Low-grade bacterial retention.

Excellent durability.

These requirements of the table Mayo model with manual elevation.

Stand steady at four races with a circular section, with 4 double wheels Ø 75 mm, with yarn protection, non-marking polymer, of which 2 with brake and 2 antistatic.

Removable work surface, deep-drawn and no open corners, with rounded perimeter. Worktop is not rotating.

Manual lifting system by safety flyer. Elevation ranges from 800 mm to 1,300 mm.

The materials and the assembly system allow the disinfection inside the washing tunnel.

Table top dimensions 650x530x20 mm

Overall dimensions 650x530x800 / 1300 mm

MAYO TROLLEYS

INSTRUMENT TROLLEYS



10510020018:

Made entirely of stainless steel 18/10 AISI 304 (X5CrNi1810), guarantees:

High degree of resistance to corrosion.

High degree of bacterial removal.

Low-grade bacterial retention.

Excellent durability.

These are the requirements of the table leads instruments:

stand steady at four races with a rectangular section, with safety tips, equipped with 4 dual wheels Ø 75 mm, with yarn protection, non-marking polymer, of which 2 with brake and 2 antistatic.

Removable work surface, deep-drawn and no open corners, with rounded perimeter. Degree of freedom and operational security + 180 ° / - 180 °. Lower shelf hard and smooth.

System of elevation by means of hydraulic precision pump, with double movement, in sealed circuit, with activation pedal. Elevation ranges f910-1270 mm.

Maximum capacity 30 kg, evenly distributed on the work surface.

Table top dimensions 1200x550x30 mm

Overall dimensions 1200x580x910 / 1270mm



G. Samaras S.A.
MEDICAL GAS SYSTEMS

10510020019/10510020020/10510020021:

Made entirely of stainless steel 18/10 AISI 304 (X5CrNi1810), provides:

High degree of resistance to corrosion.

High degree of bacterial removal.

Low-grade bacterial retention

Excellent durability.

Solid foundation consisting of two ant vibration columns, with safety tips, equipped with 4 dual wheels Ø 75 mm, with yarn protection, non-marking polymer, 2 of which antistatic and 2 with brakes.

Worktop 1.2 mm, bent, TIG welded and free of sharp edges and joints, every corner is rounded.

The materials and the assembly system allow the disinfection inside the washing tunnel.

10510020019:

Table top dimensions 1200x550x40 mm

Overall dimensions 1200x650x850 mm

10510020020:

Table top dimensions 1300x550x40 mm

Overall dimensions 1300x650x850 mm

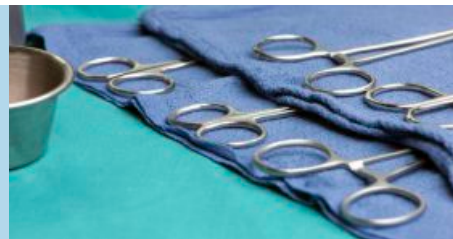
10510020021:

Table top dimensions 1500x550x40 mm

Overall dimensions 1500x650x850 mm



MAYO TROLLEYS



10510020013:

Worktop in 18/10 stainless steel AISI 304 (X5CrNi1810), removable, deep-drawn and no open corners, with rounded perimeter. Worktop is not revolving.

The requirements of this table Mayo model 10510020013 are:

Stand steady at four-spoke cast aluminum, equipped with 4 wheels Ø 50 mm, with yarn protection, non-marking polymer.

Elevation system using hydraulic pump Chrome plated steel, with single movement, a sealed circuit with activation pedal. Elevation ranges from 870 mm to 1,210 mm. Pedal ergonomically located place inside the structure.

Maximum capacity 30 kg, evenly distributed on the work surface.

Table top dimensions 750x550x30 mm

Overall dimensions 780x580x870/1210 mm



10510020015:

Stand steady at four-spoke cast aluminum, equipped with 4 wheels Ø 50 mm, with yarn protection, non-marking polymer.

Worktop in 18/10 stainless steel AISI 304 (X5CrNi1810), fixed to the structure, drawn with open corners. Fixed worktop.

Manual lifting system by safety flyer.

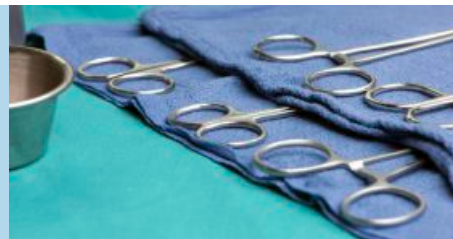
Elevation ranges 870-1210 mm.

Table top dimensions 750x550x30 mm

Overall dimensions 780x580x870/1210 mm



MAYO TROLLEYS



10510020016:

Stand steady at 5-spoke cast aluminum, equipped with 5 wheels Ø 50 mm, with yarn protection, non-marking polymer.

Worktop in 18/10 stainless steel AISI 304 (X5CrNi1810), fixed to the structure, bent and open corners.

Elevation system using hydraulic pump Chrome plated steel, with single movement, a sealed circuit with activation pedal. Elevation ranges 850-1200 mm.

Table top dimensions 700x500x30 mm

Overall dimensions 750x550x880 / 1200 mm



10510020017:

Stand steady at 5-spoke cast aluminum, equipped with 5 wheels Ø 50 mm, with yarn protection, non-marking polymer.

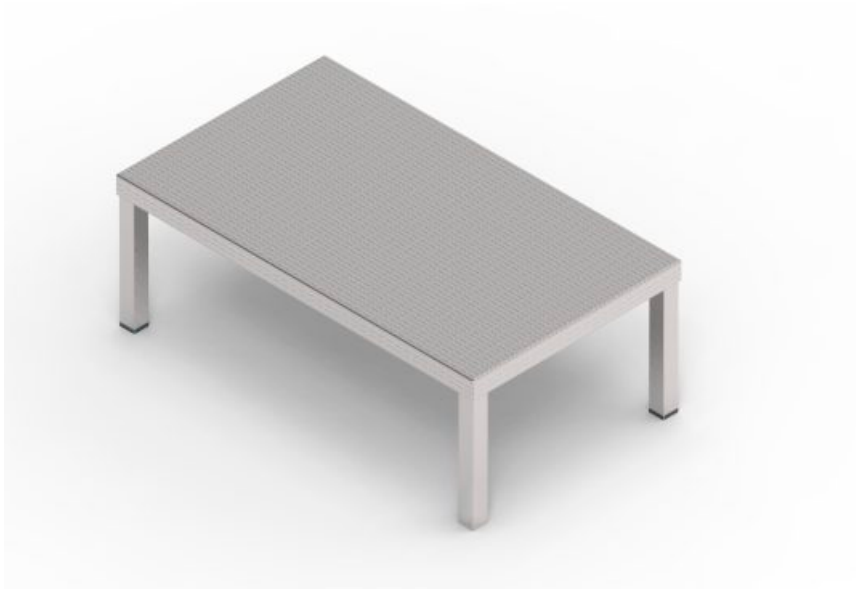
Worktop in 18/10 stainless steel AISI 304 (X5CrNi1810), fixed to the structure, bent and open corners.

Manual lifting system by safety flyer.

Table top dimensions 640x395x30 mm

Overall dimensions 640x600x745/1100 mm

STEPS FOR OPERATION THEATRE



10510030001/10510030002/10510030003:

Entirely made of 18/10 stainless steel AISI 304 (X5CrNi1810).

All welded construction TIG and electropolished, without joints, a square section of 25 x 25 x 1.5 mm. Decking buckle plate designed to ensure perfect adhesion of the surgical boot. Central reinforcement structure in support of the plan. Plan removable and washable support. 3-marking polymer feet and 1 full stainless steel that guarantees the antistatic of the platform.

The materials and the assembly system allow the disinfection inside the washing tunnel.

10510030001: Dim. 600x350x130mm

10510030002: Dim. 600x350x220mm

10510030003: Dim. 600x350x300mm



G. Samaras S.A.
MEDICAL GAS SYSTEMS

10510030004:

Entirely made of 18/10 stainless steel AISI 304 (X5CrNi1810).

All welded construction TIG and electropolished, without joints, a square section of 25 x 25 x 1.5 mm. in buckle plate walkways designed to ensure perfect adhesion of the surgical boot. Central reinforcement structure in support of the plan. Shelves, removable and washable. 3-marking rubber feet and 1 full stainless steel that guarantees the antistatic of the platform.

The materials and the assembly system allow the disinfection inside the washing tunnel.

Dim. 600x650x220 / 440 mm



BUCKET FOR OPERATION THEATRE



10510030005:

Entirely made of 18/10 stainless steel AISI 304 (X5CrNi1810). It is equipped with a handle with capacity of about 15 liters.

Base round and perfectly smooth support, with 4 retaining brackets. 4-wheel non-marking polymer Ø 50 mm

Dim. 380x380x360 mm



10510030006:

Entirely made of 18/10 stainless steel AISI 304 (X5CrNi1810). It is equipped with a handle with capacity of about 15 liters.

Base round support and perfectly smooth, with 4 containment brackets and push handle. 4-wheel non-marking polymer Ø 50 mm.

Dim. 380x380x865 mm

BOWL STANDS FOR OPERATION THEATRE



10510030007:

Structure and basin entirely made of 18/10 stainless steel AISI 304 (X5CrNi1810).

Round base, smooth, equipped with 4-wheel non-marking polymer Ø 50 mm. Frame-stand with ergonomic handle. Bowl Ø 320 mm, removable, with 6 liters capacity.

Dim. 380x380x800mm



G. Samaras S.A.
MEDICAL GAS SYSTEMS



10510030008:

Structure and basins entirely made of 18/10 stainless steel AISI 304 (X5CrNi1810).

Round base, smooth, equipped with 4-wheel non-marking polymer Ø 50 mm. Frame stand with ergonomic handle. Bowl Ø 290 mm, removable, with capacity of 6 liters.

Dim. 380x700x865mm



G. Samaras S.A.
MEDICAL GAS SYSTEMS

📍 P.O. Box: 60178, 570 01 Thessaloniki

☎ (+30) 2310 463 388

📠 (+30) 2310 464 570

✉ gsamaras@otenet.gr

🌐 www.gsamaras.gr



www.gsamaras.gr

